
Creating Bill of Materials with **WINSHUTTLE**[®] transaction**SHUTTLE**[®]

Summary

This document describes how transactionSHUTTLE can be used to create bill of materials in the SAP[®] Business Suite from data in Microsoft Excel or Access. Using the SAP transaction CS01, the following example will display usage of the transactionSHUTTLE Do-While loop feature that can upload multi-item BOMs from Access tables into SAP.

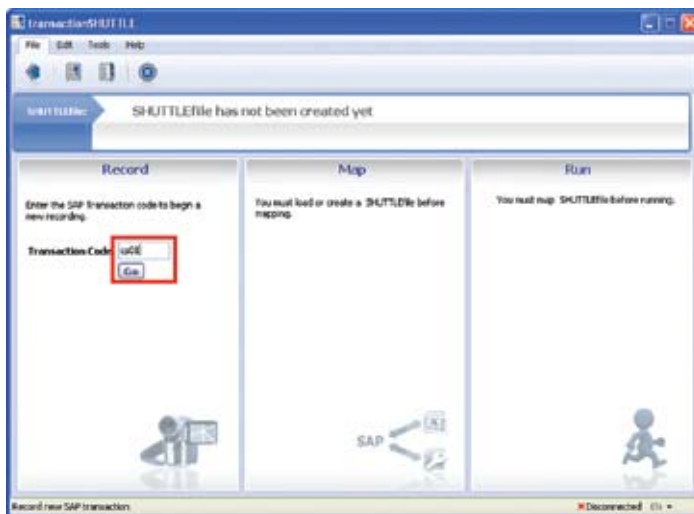
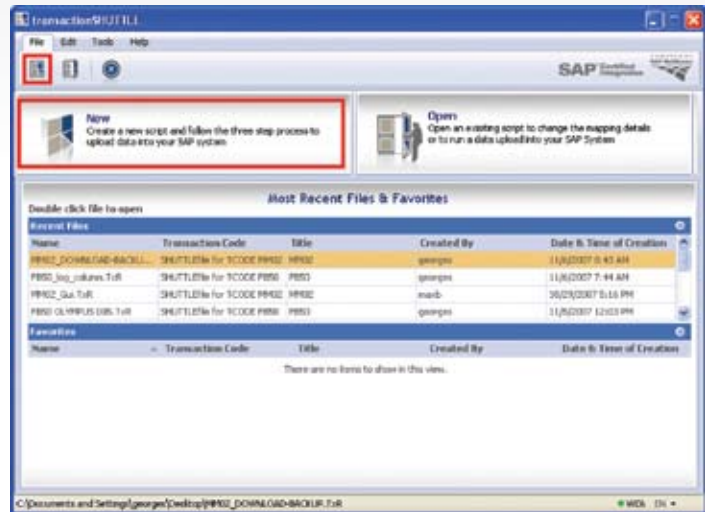
Applies To: Winshuttle transactionSHUTTLE

Using Microsoft Access with transaction code CS01

Create Bill of Materials

Launch the transactionSHUTTLE Application from the desktop shortcut or through the Windows Start Menu.

Click New.



Enter transaction code CS01 in the Transaction Code field.

Click Go.

Choose the appropriate SAP system using the System button, if necessary.

Enter appropriate User Data in the SAP Shuttle Logon window.

Click the OK button.



Record

NOTE: For most transactions, Batch Input Mode will suffice, but for downloading information from SAP transactions, or for Finance or HR transactions in which there are Dynamic Actions executing or user parameter values being used, Non-Batch Input Mode will be necessary. The distinction of Without SAP Controls and With SAP Controls is just a matter of what tools are on the transaction screens.

So, in this procedure, choose Non-Batch Input Mode.

Enter any further properties such as Title, Purpose of creation and Comments into the appropriate fields.

If you would like to lock down the editing of the SHUTTLEfile, select the Lock SHUTTLEfile checkbox. This will password-protect the SHUTTLEfile, preventing anyone from changing it.

Click the Next button.

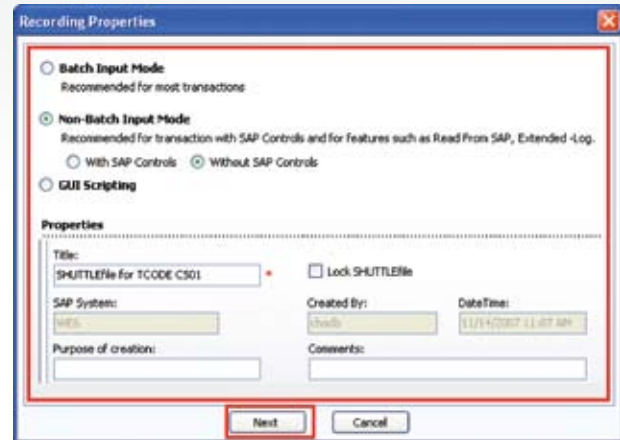
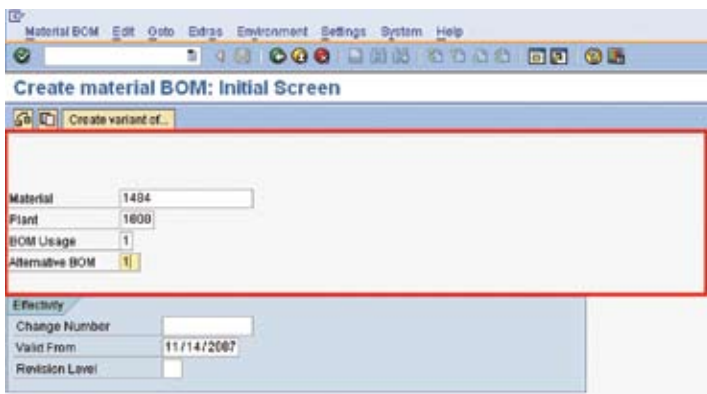
You will now be launched into the CS01 transaction.

Note: The following screens may vary according to the way your SAP system has been configured.

At this point, you are maneuvering through the transaction itself and the process should feel very natural.

That said, to make this process repeatable by transactionSHUTTLE, there will be a few modifications to the process compared to how you would manually create a bill of materials. These differences will be identified throughout the rest of this document.

Press the [ENTER] key.



Enter header data into the initial screen :

- Material
- Plant
- BOM Usage
- Alternative BOM

** Keep in mind **

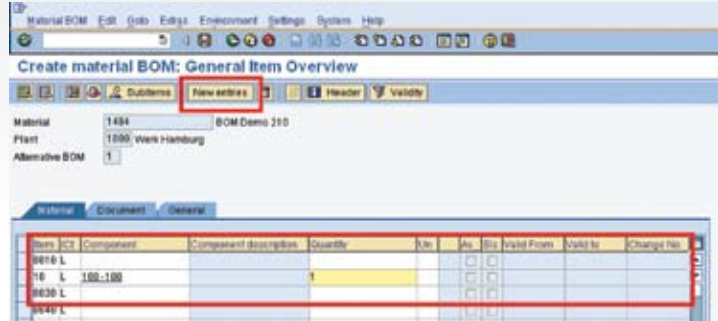
The next step may be different than the manual entry process

Press Enter to continue.

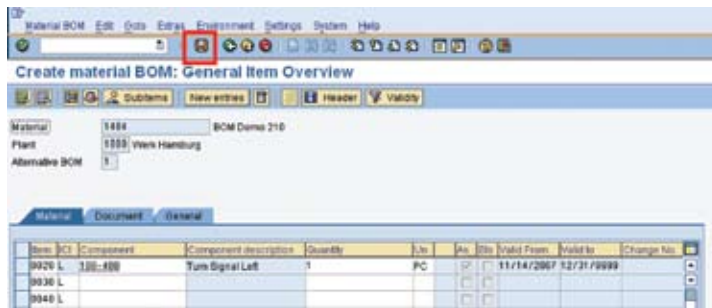
Enter the BOM Component information on the second line of the grid:

- Item Number
- Component
- Quantity

** Keep in mind *
These steps will most likely be different
than manual entry*



Click the New Entries button to enter the next item.



At this point, click the Save icon to save the BOM.

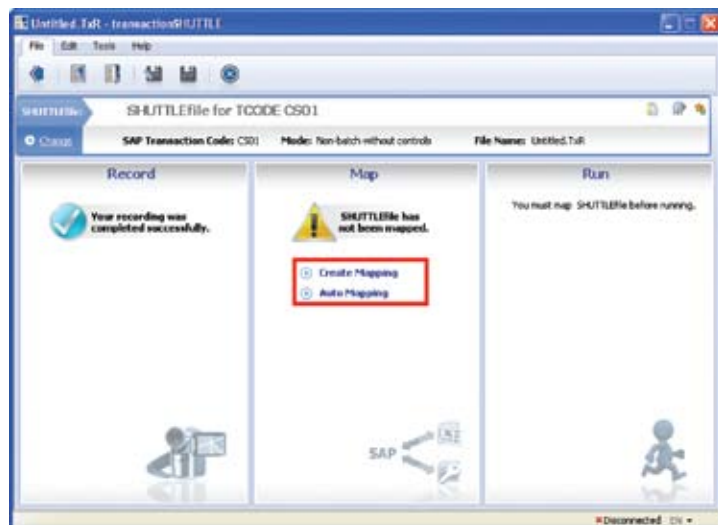
Map

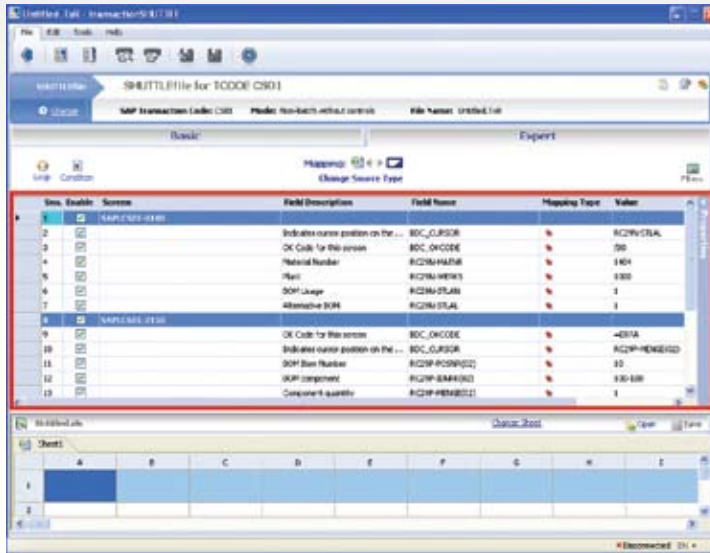
It is now time to create the mapping for this transaction.

Mapping a SHUTTLEfile is just a matter of connecting SAP fields to a data file. transactionSHUTTLE provides a Mapper to facilitate this process.

Auto Mapping will map the entire SHUTTLEfile to an Excel spreadsheet. Because of the complexity of this transaction, we will choose the Create Mapping option instead.

Click the Create Mapping link on the Map panel.





The screenshot to the left shows the Expert Tab of the Mapper.

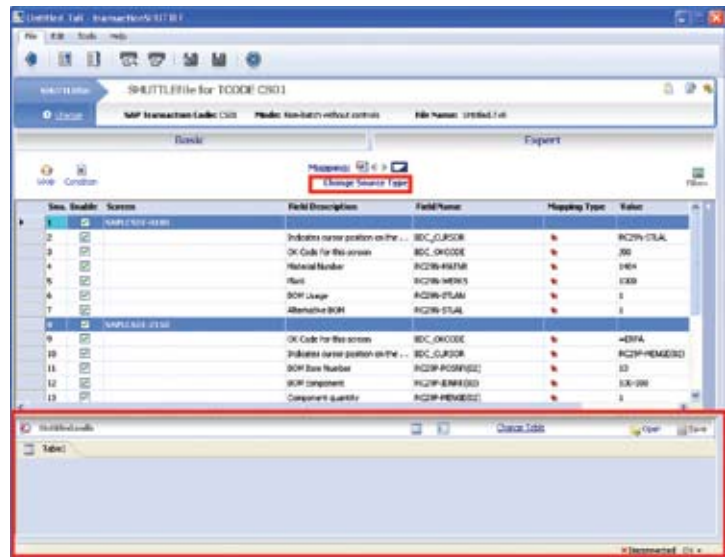
In each of the rows of the Mapper, you will see:

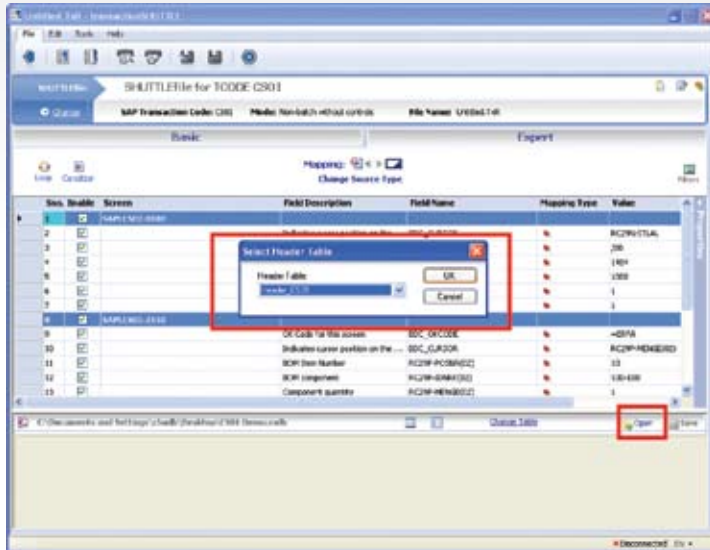
- Mapper Row number – this is just a reference number
- Enable flag – only enabled Mapper rows will be executed by transactionSHUTTLE
- Screen / Screen Number – Technical screen information from the recorded transaction
- Field Description – The label associated with the SAP technical field name.
- Mapping Type – Fix Value, Excel to SAP, SAP to Excel [or, if mapping to Access: Access to SAP, SAP to Access]
- Value – Values assigned to the SAP field; either fixed values, or values to or from the assigned data source
- Notes – Free-format notes to provide useful information to users of the SHUTTLEfile

In the Data Source Preview section, you will see a preview screen of the selected data source.

To change the Data Source, click the Change Source Type link at the top of the Expert Tab. This displays a drop-down box to switch to Microsoft Access. The Preview section will also change to reflect the choice.

In this case, we will use Access.





It is now time to begin the mapping process.

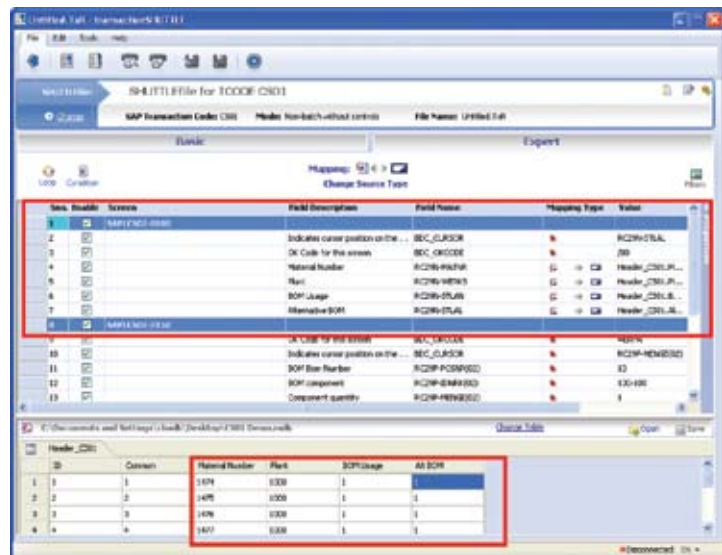
The easiest way to remember how to map is this: drag from the source of the data to the destination.

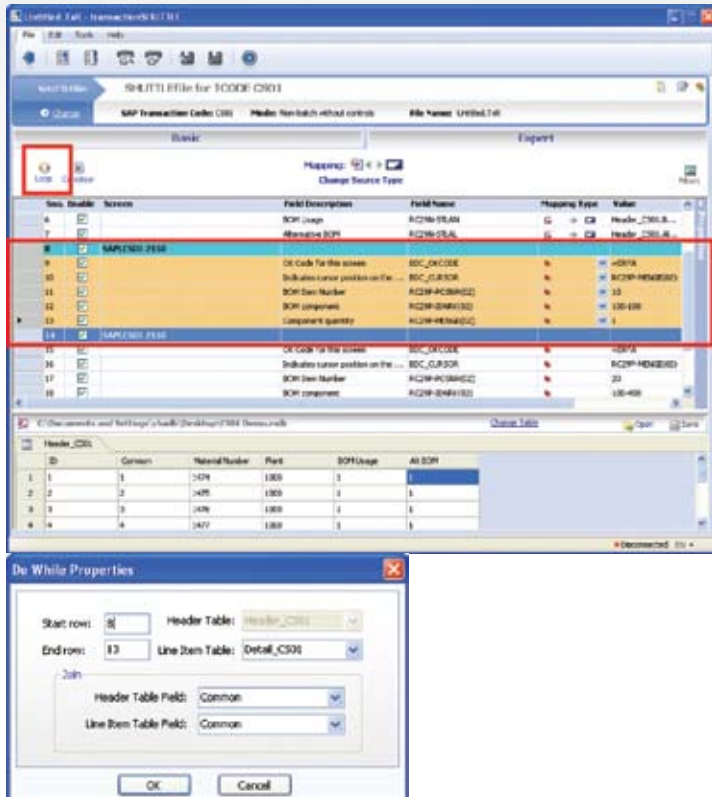
Keeping that in mind, we will be uploading data from Access to SAP.

Map the Header data first:

Click the Open button from the Access Preview. Open the Database and Select the Header Table.

Map the fields that will constitute the header. Click and drag the Material Number column to row 4. Continue this process for Plant, BOM Usage and Alt BOM column.





To allow the Access database to contain data for multiple BOM with a variable number of line items per BOM, we will insert a Loop around some Mapper rows.

In this case, we will select Mapper rows 8 through 13. Then click the Loop button.

The Do While Properties dialog box will then open.

The dialog box contains default values, which can be overridden by the creator of the SHUTTLEfile.

The Start row & End row fields refer to the Mapper rows contained within the Loop.

Select the name of the Line Item Table.

In the Join section of the window, select the name of the field that each table shares. This shared field will designate the header and line item data that is shared by one BOM.

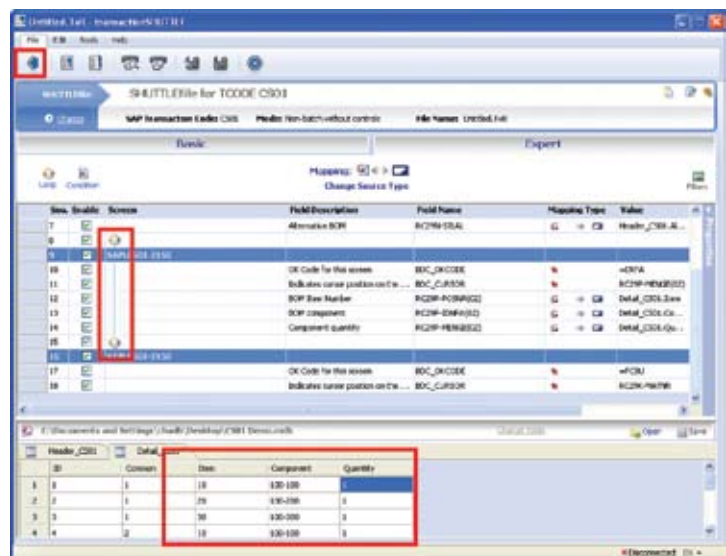
Click the OK button on the dialog box to insert the Loop around the selected Mapper rows.

The Mapper reflects the following changes as a result of inserting the Loop:

The graphical depiction of the Loop around the selected lines indicates which Mapper rows will be contained within the loop.

Click and Drag the Item, Component, and Quantity to the rows that match in rows 12 thru 14.

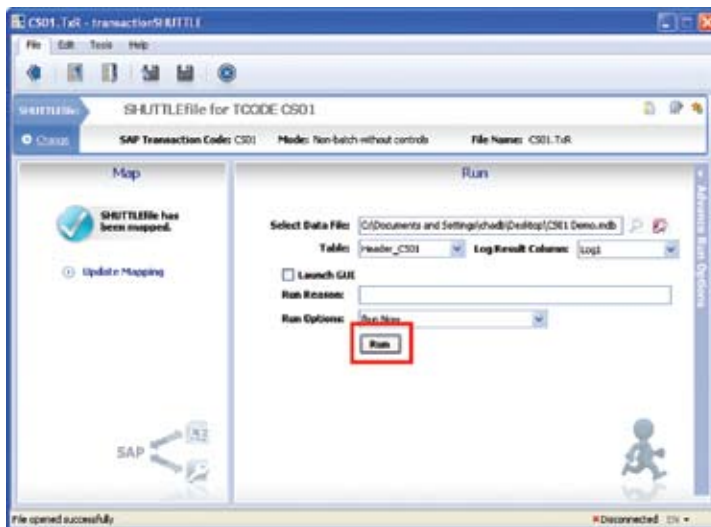
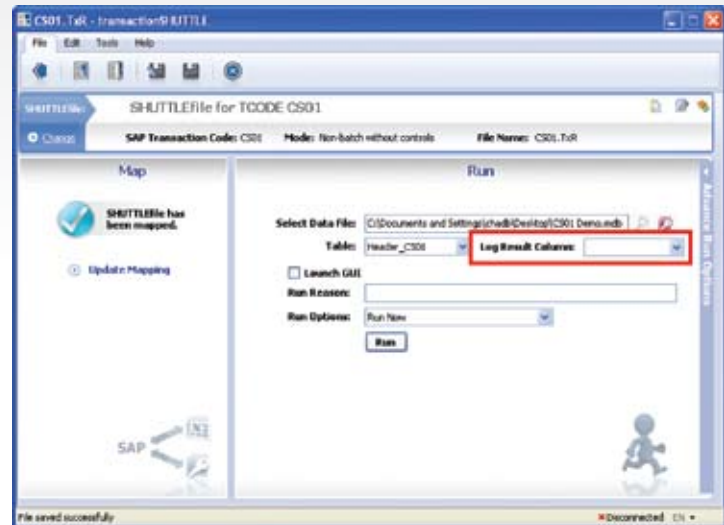
Click the arrow button to navigate back to the next step of the process.



If necessary, you can navigate back to the Mapper by clicking the Update Mapping link on the Map panel.

Click the Access icon to the right of the Select Data File field to open the mapped Excel spreadsheet.

Select the Log Result Column drop down and choose the column that SAP messages will be returned to.



Run

Click Run to start the BOM creation.



About Winshuttle

Winshuttle, Inc. is a software company that has been providing user-enabled SAP data shuttling applications for SAP users worldwide since 2000. Winshuttle is one of the fastest growing SAP solution providers ranking 124 of the Inc. 500 (Inc. magazine's) fastest growing companies for 2007, and only the 5th in Washington State.

More than 250 Global 2000 companies are using Winshuttle solutions including Hubbell, Inc., Apotex, Inc., Cutter & Buck, Inc., Canada Post, Medtronic, Inc., and Coca Cola Bottling Company Consolidated. Winshuttle software is simple to learn, simple to use, and simple to deploy, especially because they do not require any programming or utilize IT resources. Winshuttle software empowers business users in Order-to-Cash, financials, and human capital management to easily automate the incorporation of Excel data into any of the SAP Business Suite modules, transforming business processes across the enterprise.

Contact Information

For more information, please contact: 1-800-711-9798, or visit our Web site at: www.winshuttle.com

Copyright Notice

This document is for informational purposes only. WINSHUTTLE MAKES NO WARRANTIES, EXPRESS, IMPLIED OR STATUTORY, AS TO THE INFORMATION IN THIS DOCUMENT.

Except as expressly provided in any written license agreement from Winshuttle, the furnishing of this document does not give you any license to patents, trademarks, copyrights, or other intellectual property rights covering subject matter contained in this document.

© 2008 Winshuttle, Incorporated. All rights reserved.
transactionSHUTTLE, runSHUTTLE, and tableSHUTTLE are trademarks of Winshuttle, Incorporated in the United States and/or other countries.

The names of actual companies and products mentioned herein may be the trademarks of their respective owners.